

# 360CONNECT

MAKING CONNECTIONS ACROSS THE RESEARCH SPECTRUM—  
FROM CELLS TO CLINICS TO COMMUNITIES—TO TRANSFORM HEALTH



## RECOVERED BUT WITH AN UNCERTAIN FUTURE

By broadcasting his journey on social media, Clement Chow, PhD, assistant professor of human genetics, had hoped to make the best of a bad situation. But it didn't take long before his tweets became shorter and the time between them longer. His fight against COVID-19 had become more grueling than he ever anticipated.

[Read Chow's story](#), and about health care providers and scientists at U of U Health who are working to bring us to the other side of the pandemic.

[Read More](#)

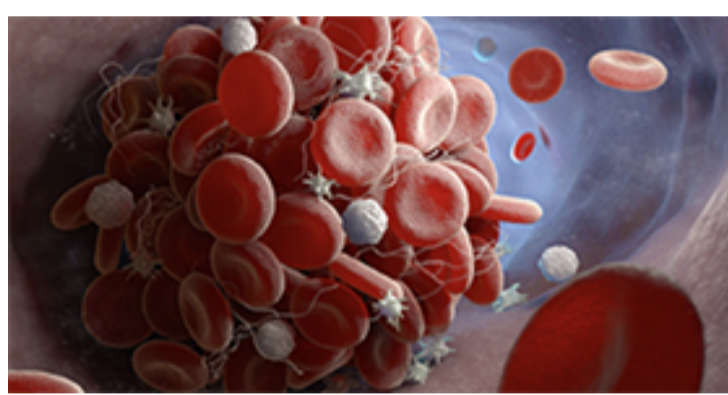
## RESPONDING TO SOCIAL NEEDS IN THE ER



For doctors and nurses facing crushing workloads in the emergency department, “stitch ‘em and ditch ‘em.” is one way to cope. Alas, this pragmatic approach ignores a patient’s social needs, and that’s a critical oversight, according to research from the College of Nursing.

[Read More](#)

## COVID-19 CAUSES 'HYPERACTIVITY' IN BLOOD-CLOTTING CELLS



Changes in blood platelets triggered by COVID-19 could contribute to the onset of heart attacks, strokes, and other serious complications in some patients who have the disease, according to U of U Health scientists.

[Read More](#)

## IN THE LOOP



NOTEWORTHY

- [University of Utah Health Names Two Faculty as Benning Scholars](#)
- [Back to Campus Training and Standards](#)
- [Shaina Short Awarded NIDCD Early Career Research Award](#)
- [Dr. Kathy Sward to be Member of Biomedical Computing & Health Informatics Study Section Center for Scientific Review](#)
- [Updates to Standard Operating Procedures](#)
- [Cardiologist Rashmee Shah Earns Doris Duke Charitable Foundation Award](#)
- [Epidemiologist Matthew Samore Earns VA Under Secretary's Award](#)



HAPPENINGS

- [3i Covid Flash Talks: Neuroscience Implications \(Aug 6\)](#)
- [3i Covid Flash Talks: Health Disparities & Vulnerable Population \(Aug 21\)](#)
- [Schedule of Clinical COVID-19 Update Live Streams](#)



OPPORTUNITIES

- [COVID-19 Research Funding Opportunities](#)
- [Burroughs Wellcome Fund: Investigators in the Pathogenesis of Infectious Disease](#)
- [DRC Pilot & Feasibility Awards](#)
- [American Foundation for Suicide Prevention: Focus Grants - Reaching 20% by 2025](#)
- [William T. Grant Foundation: Research Grants on Reducing Inequality](#)



RESOURCES

- [Sign Up for the COVID-19 Research Newsletter](#)
- [COVID-19 Central @TheU](#)
- [COVID-19 Research Resources \(Pulse\)](#)
- [SVP for HS Research](#)
- [Vice President for Research](#)
- [U of U Health Research](#)
- [Center for Clinical and Translational Science](#)
- [Clinical Research SOPs](#)
- [Internal Funding Opportunities](#)
- [Corporate & Foundation Funding Opportunities](#)



SPOTLIGHT PUBLICATIONS

- [Factors Associated with Depression in African American Patients Being Treated for Cancer Pain \(PMN\)](#)
- [The Landscape of Prescription Drug Shortages During the COVID-19 Pandemic \(JMT\)](#)
- [Rapid surveillance of COVID-19 in the United States using a prospective space-time scan statistic: Detecting and evaluating emerging clusters \(SS-t E\)](#)
- [Neutrophil Extracellular Traps \(NETs\) Contribute to ImmunoThrombosis in COVID-19 Acute Respiratory Distress Syndrome \(Blood\)](#)
- [Utah Women's Health Review](#)



HEADLINES

- [How Does COVID-19 Affect Expecting Women and Their Babies? \(Discover\)](#)
- [Why Utah Health Officials Call Future COVID-19 Vaccine Best Path to Herd Immunity \(Deseret News\)](#)
- [Our Lifespan Could be Predicted by the Mutations We Collect in Our DNA \(Newsweek\)](#)
- [Effect on Platelets Helps Explain Blood Clot Issues \(Reuters\)](#)
- [FDA Data Shows Numerous Drugs in Shortage, Including a Leading Antidepressant \(USA Today\)](#)
- [Utah's Pacific Islanders Take Culturally Focused Approach in Reducing High Number of COVID-19 Infections \(Salt Lake Tribune\)](#)



## SPREAD THE WORD, NOT THE VIRUS

Coming soon to an elevator and hallway near you, a few familiar faces will be reminding you to stay safe at work.

[Read More](#)

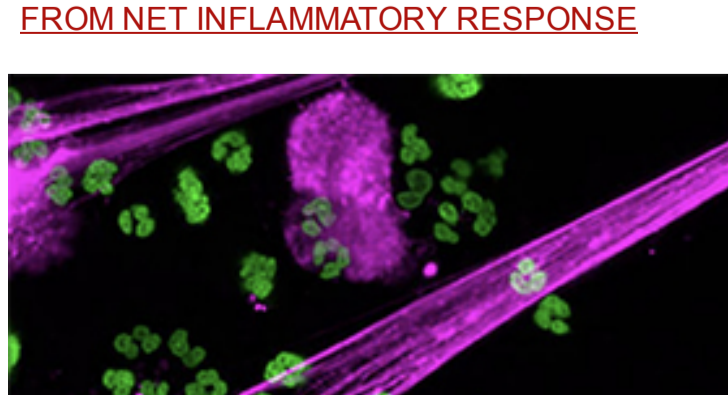
## "HOTSPOTS" OF COLORECTAL CANCER DEATH AMONG YOUNG MEN IN THE U.S.



A study led by Huntsman Cancer Institute investigator Charles Rogers, PhD, identifies “hotspot” areas in the U.S. where colorectal cancer is on the rise and killing young men at high rates. The analysis reveals trends about who these men are and how their cancer progresses.

[Read More](#)

## CLUES TO COVID-19 COMPLICATIONS COME FROM NET INFLAMMATORY RESPONSE



A phenomenon called NETosis—in which infection-fighting cells emit a web-like substance to trap invading viruses—is part of an immune response that becomes increasingly hyperactive in COVID-19 patients on ventilators and people who die from the disease.

[Read More](#)

About [360Connect](#)

For ideas and feedback, email

[360Connect@hsc.utah.edu](mailto:360Connect@hsc.utah.edu)

To subscribe to this newsletter, [CLICK HERE](#)

To unsubscribe, [CLICK HERE](#)



[Subscribe](#) to our email list.